

TRAVEL PACKAGE 2021

Your one stop shop travel partner!

Travel Desk Team
Additional Exhibition Services

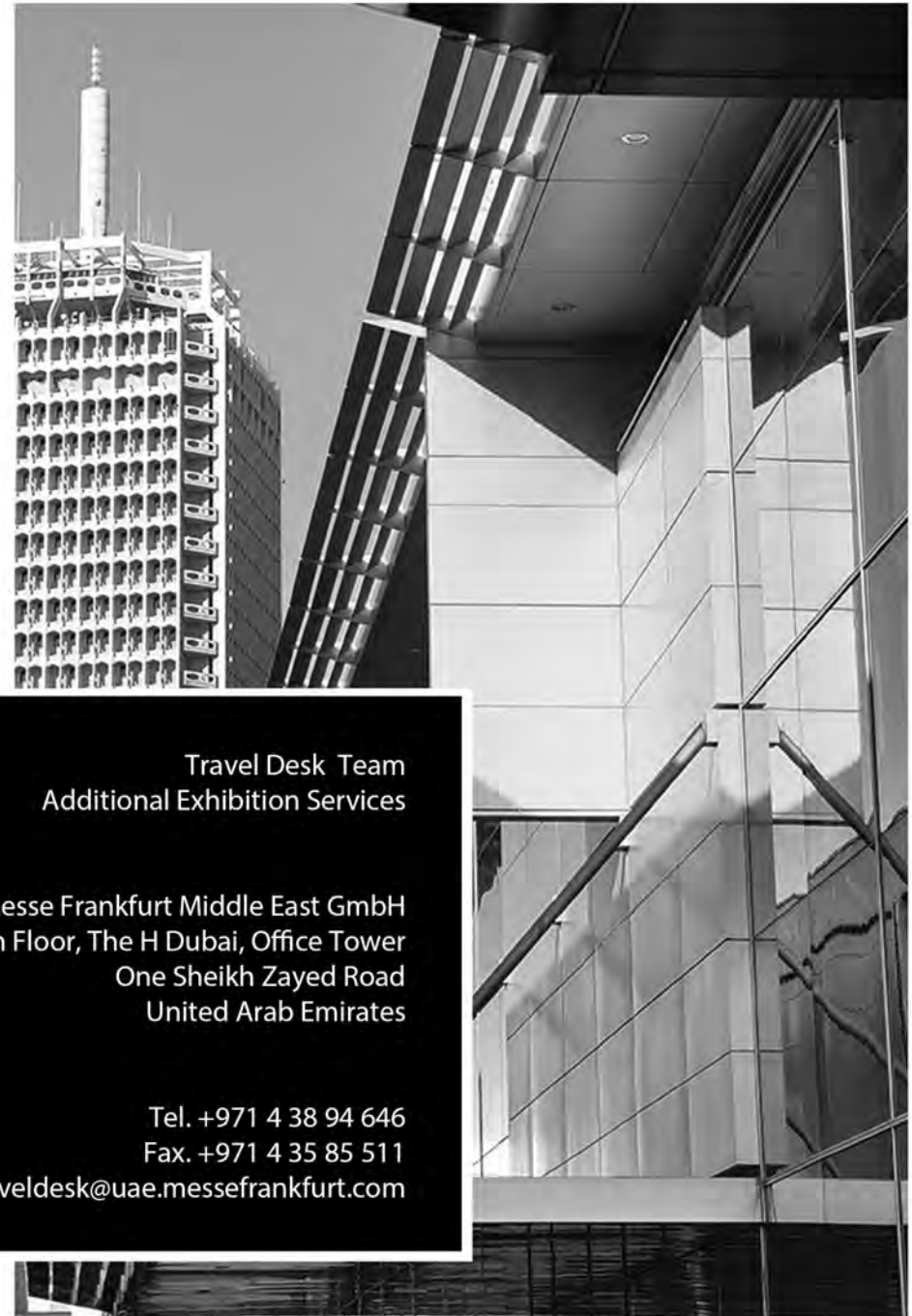
Messe Frankfurt Middle East GmbH
14th Floor, The H Dubai, Office Tower
One Sheikh Zayed Road
United Arab Emirates

Tel. +971 4 38 94 646

Fax. +971 4 35 85 511

traveldesk@uae.messefrankfurt.com

Traveldesk



Traveldesk

Your one stop shop
travel partner!

TRAVEL HIGHLIGHTS

Flights: Simplifying the process to serve you a well-travelled journey.

Visa: Easy and hassle free experience for exhibitors and visitors with up to 3 to 5 working days of Visa processing.

Meeting Rooms: Helps you facilitate to host smaller corporate meetings or breakout sessions and seminars during the exhibitions.

Tours and Excursions: Avail tailor made tours to your favourite destination at most affordable rates.

BENEFITS

Complimentary Airport Transfer (from Dubai airport).

Secure exceptional early bird rates, more competitive than any online booking engine.

Single point of contact from the beginning of your travel plans until departure from Dubai.

Flexibility in modifying/amending your reservation.

Dubai has a variety of well-appointed hotels designed for the business traveler, below is a list of hotels which can be found within and around the vicinity of the Dubai International Convention Centre (formerly known as the Dubai World Trade Centre or DWTC). The Messe Frankfurt Team would like to ensure your stay is as convenient and cost effective as possible.

HOLIDAY INN ★★

Sheikh Zayed Road, Dubai

Easy to find along Sheikh Zayed Road next to the Dubai Water Canal. Holiday inn is centrally located at the heart of key business and leisure districts in Dubai and just few minutes away to Dubai Mall, Burj Khalifa and the Dubai World Trade Centre.

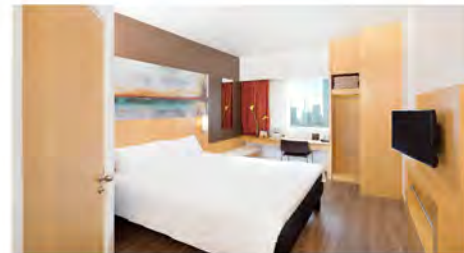


Rooms: 171

Airport: 19km

Location: Sheikh Zayed Rd. 15 mins to DWTC

Amenities: WIFI Access and 24 hrs Gym



Rooms: 588

Airport: 15km

Location: within the fairgrounds

Amenities: WIFI Access, swimming pool, spa and restaurant



IBIS ONE CENTRAL ★★ ★

Sheikh Zayed Road, Dubai

The Ibis One Central is located within the International Exhibition Centre. It has a trendy Asian fusion restaurant with a terrace, and an airy lobby lounge. Situated near Sheikh Zayed Road, the Ibis World Trade Centre is 3 km from landmark Burj Khalifa skyscraper and 5 km from The Dubai Mall.

ROVE HOTEL WTC ★★★

2nd December Street, Al Jafliya, Dubai

Adjacent to Dubai World Trade Centre which is strategically located between new and old Dubai. Equally accessible are the vibrant and ultra-modern sky-scrapers of Sheikh Zayed Road and key entertainment and business hubs such as The Dubai Mall, City Walk and Dubai International Financial Centre.



Rooms: 236

Airport: 25 minutes drive

Location: 10 mins to DWTC

Amenities: WIFI Access, swimming pool restaurant and fitness club



Rooms: 412

Airport: 14km

Location: within the fairgrounds

Amenities: WIFI Access, swimming pool, spa, restaurant and business center



NOVOTEL WTC ★★★★★

Sheikh Zayed Road, Dubai

Novotel WTC in the heart of Dubai near Sheikh Zayed Road, connected to the Dubai International Convention Centre. It features a large outdoor pool and free private parking. 24-hour reception and a concierge service which can arrange car hire and tours. DIFC and Sheikh Zayed Road are 5 minutes by car and Dubai Mall is 10 minutes' drive away. Free shuttle service to major malls and the beach is also offered.

WTC APARTMENTS ★★★★★

Sheikh Zayed Road, Dubai

Ideally located amongst the major landmarks of Dubai, apartments are fully furnished and serviced for your comfort and convenience. Dubai metro runs door-to-door between the Dubai World Trade Centre station and all major landmarks including Dubai International Airport, making this an ideal location for business.



Rooms: 219
Airport: 14km
Location: within the fairgrounds
Amenities: WIFI Access, swimming pool, spa and pharmacy

Rooms: 471
Airport: 15 minutes drive
Location: adjacent to DTWC
Amenities: WIFI Access, swimming pool, restaurant and fitness club.



VOCO ★★★★★ Sheikh Zayed Road, Dubai

Occupying a prominent position on sheikh zayed, close to business districts and popular attractions. The Superior room include Ipod docking systems Buffet Breakfast is complimentary. WTC Metro station is a 5-minute walk away from the hotel.

CONRAD ★★★★★

Sheikh Zayed Road, Dubai

Located conveniently in the hub of Dubai's commercial centre on Sheikh Zayed Road, Conrad Dubai is a stylish city haven within close proximity to Dubai's international financial and convention centre, one of the world's fastest growing airports, as well as world-class shopping destinations.



Rooms: 555

Airport: 12km

Location: adjacent to DWTC

Amenities: WIFI Access, swimming pool, spa and 24 hr in room dining.



Rooms: 654

Airport: 10km

Location: adjacent to DTWC

Amenities: WIFI Access, Shine Spa, 24hour In-room Dining Restaurant



SHERATON GRAND ★★★★★

Sheikh Zayed Road, Dubai

The Sheraton Grand Hotel is located in the center of Dubai's business district; right opposite the Dubai World Trade Centre and within walking distance of the Dubai Convention Center. Situated on the Sheikh Zayed road, the hotel is easily accessible from Dubai International Airport, metro station as well as all leisure hotspots of Dubai.

H HOTEL ★★★★★

Sheikh Zayed Road, Dubai

Located at # 1 Sheikh Zayed Road, The H Dubai, is a gateway to the Middle East's most dynamic city. It is just a short distance from all of city's main attractions and business districts including Burj Khalifa, Dubai Mall, Dubai Frame, Dubai Garden Glow, La Mer Beach, and Dubai World Trade Centre.



Rooms: 236
Airport: 10km
Location: adjacent to DWTC
Amenities: WIFI Access, , Pool, Spa, Health Club & Restaurant.

Traveldesk

SAFETY MEASURES

Staff Training

In order to have an effective cleaning and sanitization program, the team health, safety and knowledge are vital. All Hotels have received specific training on WHO and Ministry of Health approved COVID-19 preventive and responsive protocols which include but are not limited to Hand Hygiene, Respiratory Hygiene, Physical Distancing, Cleaning and Sanitizing best practices, Safe Food Handling and Food Hygiene. Our Health & Hygiene manager personally reviews and ensures all protocols are stringently followed.

Temperature Screening

Temperature screening is implemented at all entrance points, including both for guests and employees. A dedicated nurse is available 24/7 on call to respond as per the protocols set by Dubai Health Authorities.

Personal Protective Equipment

All hotel staff wear appropriate PPE while at work. Hotels have PPE kits including individual disinfectant wipes available for our guests.

Social Distancing

They adhere social distancing throughout the hotel. Signages are placed in public spaces including reception and elevators to remind guests to maintain social distance. In the restaurants, tables are placed 2m apart to maintain distance. Only 30% capacity per elevator is permitted.

Cleaning and Sanitization protocols

Hotels have enhanced their cleaning protocols as recommended by UAE authorities in cleaning and sanitizing guest rooms, public areas and back-of-the-house areas. And have increased the frequency of cleaning of all high-touch areas and public washrooms that affect guests and employees. They use hospital-grade disinfectants and approved cleaning products. Sanitization stations are readily available for guests and employees in public areas and back-of-the-house areas.

Physically Distant yet Connected

Guests can communicate their requests directly through their phones via our WhatsApp messenger service without using the house phones. All services such as room service, room amenities and laundry are specially packaged and delivered at your door to avoid contact.

ARRIVAL

- Airport Limousines are thoroughly cleaned and disinfected before and after each use. Only two guests are allowed in each car and guests are not permitted in the front passenger seat.
- For guests arriving in their own car, parking is allocated at designated area. Valet service is currently unavailable as per local regulations.
- Guest luggage is sanitized on arrival. Luggage carts are also sanitized after every use.
- Guests are kindly requested their arrival time, in order to ensure we are prepared for their arrival.
- Protective screens are installed at the reception desk to avoid direct contact with the staff.

GUEST ROOMS

- Every room undergoes intensive cleaning and sanitization after guest departure. Departure rooms are kept vacant for 24 hours before new check-in.
- All non-essential items such as pen, pad, collateral etc. are removed from guest rooms.
- Minibar products are removed from the room and can be ordered upon check-in or via in-room dining.
- All linen including bed linen and towels are sterilized and securely packaged as per the guidelines provided by Dubai Health Authority.

HEALTH & WELLNESS FACILITIES

- The Health Club and Swimming Pool is open with strict compliance to social distancing & safety guidelines.